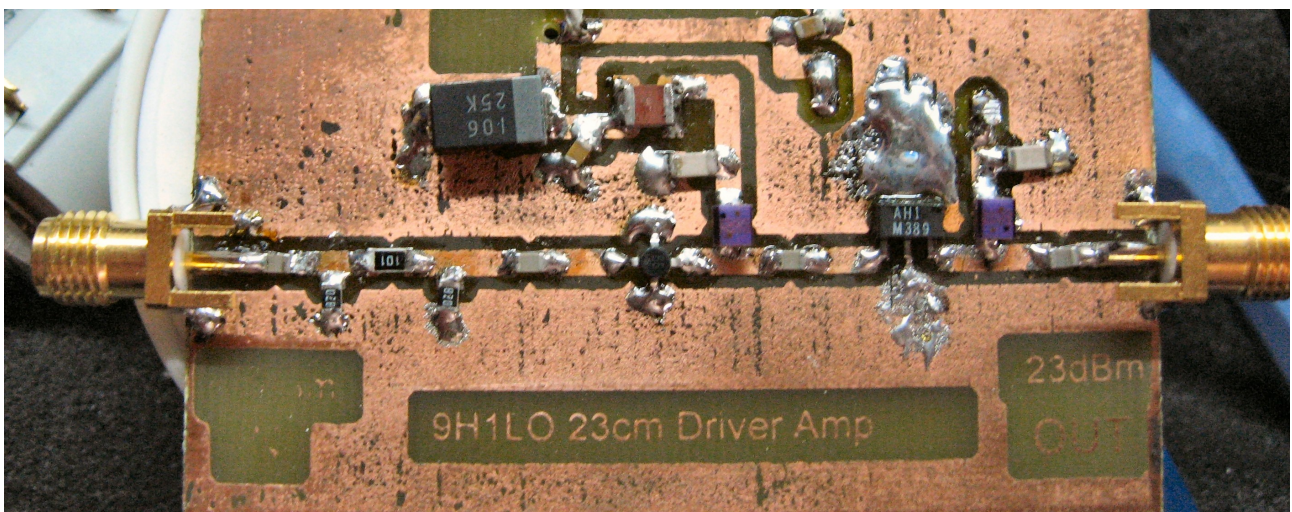
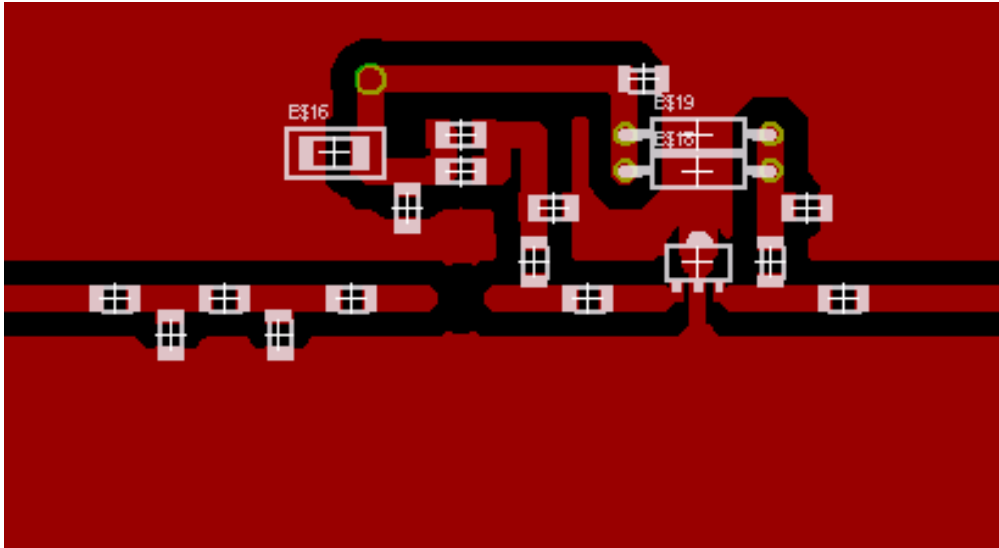


The driver stage is a Mini Circuits ERA-5 MMIC which provides about 20dBG at 1.2GHz. The main amplifier is a WJ AH-1 MMIC with 13dBG and a high P1 of 23dBm.

The components apart from the 56ohm bias resistor, are all mounted on the top side of the board.

The bottom side is left as ground. Input and output connectors are SMA type.



All components and PCB for this project are available cheaply from www.9h1lo.net



PCB Layout - Print this page as is to scale on A4